

# AIRSTORM

## Versions available

- Format 990 mm
- Format 1340 mm
- Format 1800 mm

Device for glazing with independent axes, designed by **TECNOCER** s.r.l. under the exclusive license of GEMATA SpA: Patent No. **IT1388913** The innovative concepts offered by our machine are:

- independent movement of the dispensers in the application of glaze;
- unlimited creation of work trajectories in order to allow optimal drafts at full field;
- spraygun system for a higher quality application;
- possibility to create designs and effects with different shades on the tile;
- innovative ignition switch-off system when the material passes;

All this is made possible by the new integrated software, which processes the operator's requests in real time directly from the line supervision system

## OPTIONAL

- Flowmeters for nozzle flow management
- Automatic cabin wash
- Input format self-learning with laser sensor
- Remote assistance

## CARATTERISTICHE TECNICHE

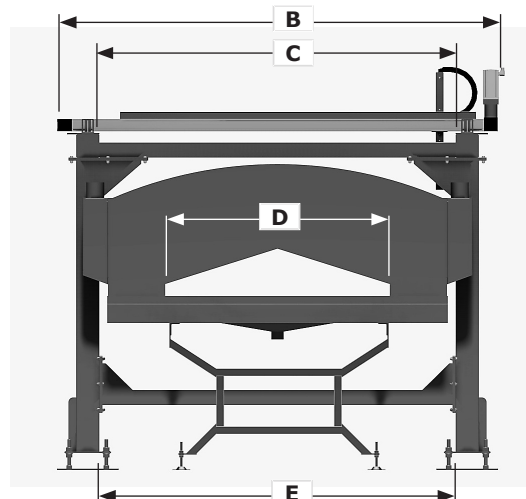
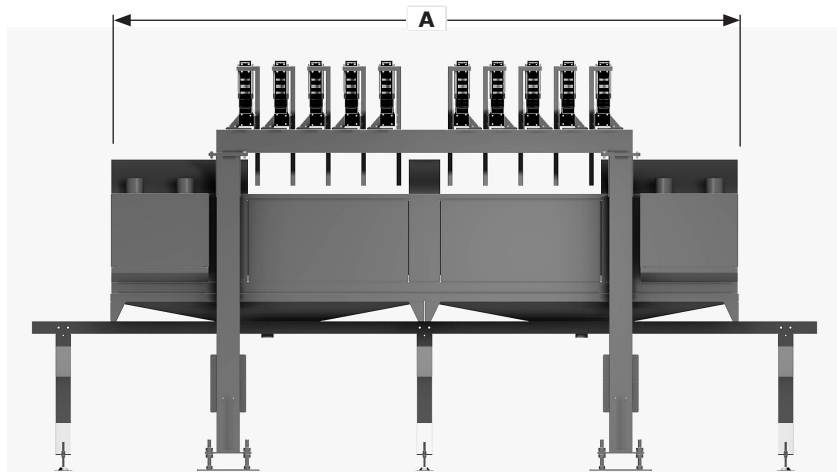
- Power: 20 kW
- Operating pressure: 1 ÷ 10 bar
- Machine weight: 800 kg



## CARATTERISTICHE FUNZIONALI

- Independent dispenser movement (from 1 to 12)
- Stainless steel structure with 150 x 150 x 3 tubulars for no vibrations whatsoever
- Wizard to create the optimal application
- Weight management on the tile with GCP
- Creation and management of production recipes in real time
- Completion compatible with industry 4.0
- Possibility to work with any spraying system (HVLP, Airless, Airmix)

Mod./Size	A	B	C	D	E
<b>1000</b>	4000	2400	2200	1150	1900
<b>1340</b>	4000	2800	2600	1450	2300
<b>1800</b>	4000	3100	2900	1900	2600



TECNOCER ITALIA SRL

Via S. Giacinto, 6/8/10

41042 Fiorano Modenese (MO)

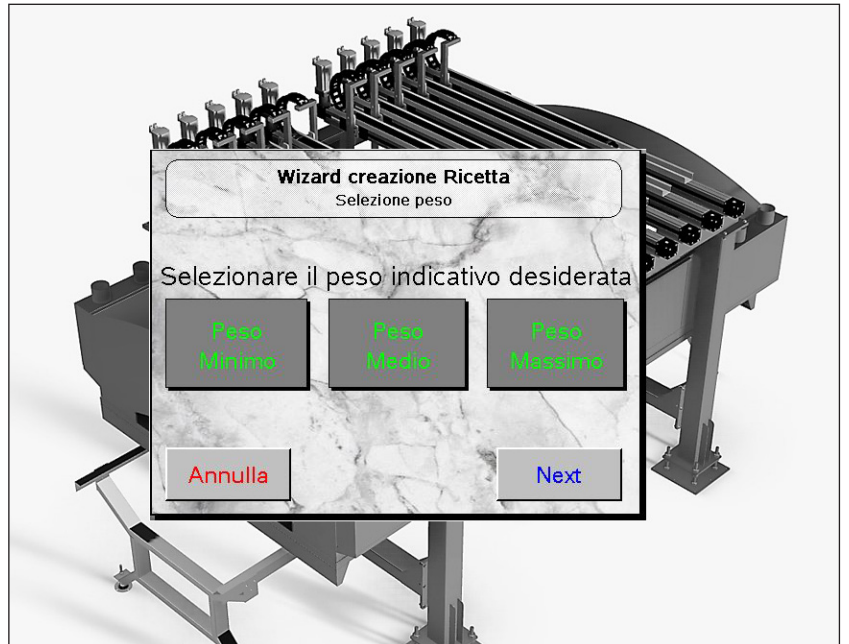
Tel. +039 0536/805606 - +039 Fax 0536/807106

info@tecnoceritalia.it - www.tecnoceritalia.it

**TecnoCer** s.r.l.  
TECNOLOGIE  
CERAMICHE  
ITALIANE **ITALIA**

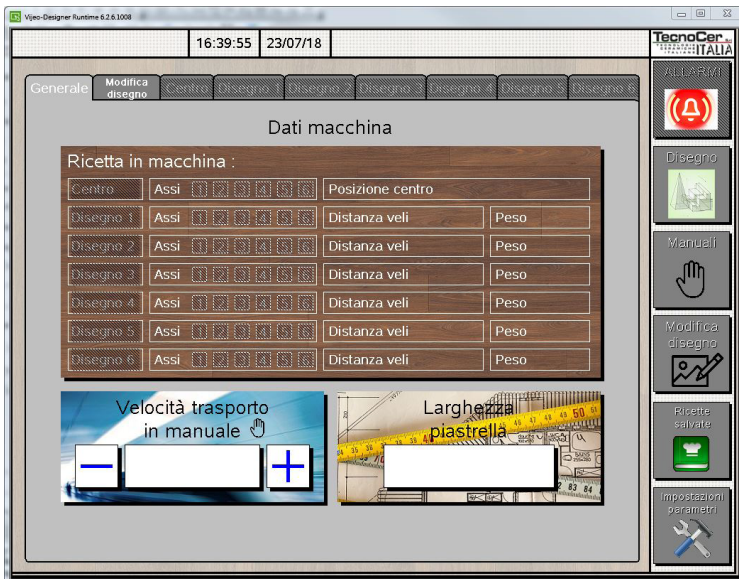
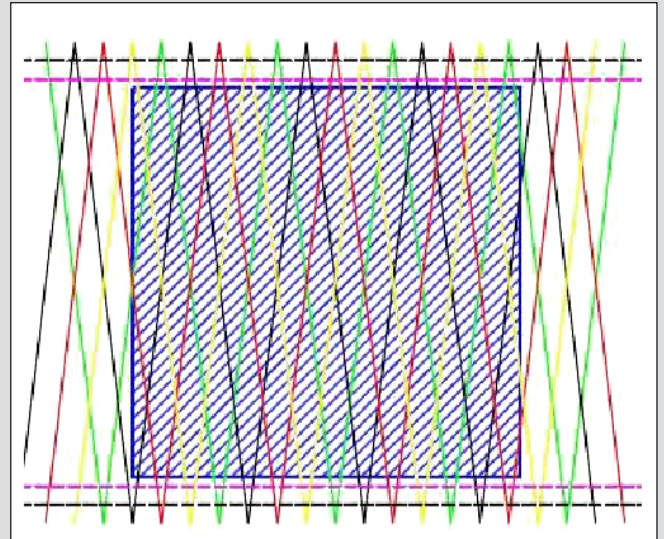
**WIZARD**

- Wizard to create application recipes, which are useful for the operator in the various steps, simplifying machine use and managing parameters, such as:
  - weight;
  - axes handling;
  - intensity of coverage.



**APPLICATION CONTROL**

Software for the automatic application management, developed according to the speed of the tiles and optimised in order to obtain the best glaze application with no imperfections



**OPERATOR INTERFACE**

Man/Machine interface consisting of a Touch panel monitor and management system of functions or recipes, with optional remote diagnostics