

PUMP TB3

Designed to be integrated into the glazing line, the PUMP TB3 transfers glazes and products for the water-based ceramic industry, to machinery dedicated to the application of decoration on tiles.

Multi-membrane glaze pump consisting of:

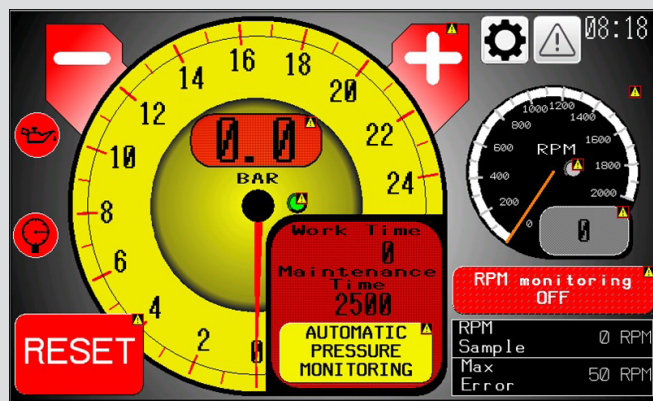
- Stainless steel manifold to prevent deposits and scaling
- 1.1 kW Brushless motor to provide flow and pressure regardless of the number of outputs used
- Stainless steel overpressure valve to protect the pump body from water hammers
- Integrated pump body oil level check
- Pressure management software with pump feedback
- Automatic maintenance management
- Automatic pump washing program
- Dynamic nozzle control system

PERFORMANCE

Pumping of abrasive and non-abrasive products (e.g. Grit, Crystalline, Glaze, Slipware, Slips, Water, etc.), with a maximum viscosity of 40 sec. measured with ford4 cup and density from 1000 to 2000 g/ dm³



CONTROL PANEL



TECHNICAL DATA

- Installed Power: 1.1 kW
- Power supply: 400/440 Vac - 50/60 Hz
- Auxiliary Circuits Voltage: 24 Vdc
- Maximum Pressure: 25 bar
- Nominal Pressure: 1±20 bar
- Flow rate: 30 l/min
- Tank Capacity: 0.6 litres
- Weight: 95 kg