



PROCESS



NEUMAN & ESSER

Impact Classifier Mill eXtra ICX

NEA ICX IMPACT CLASSIFIER MILL EXTRA

The solution for extra-fine grinding requirements

General Description

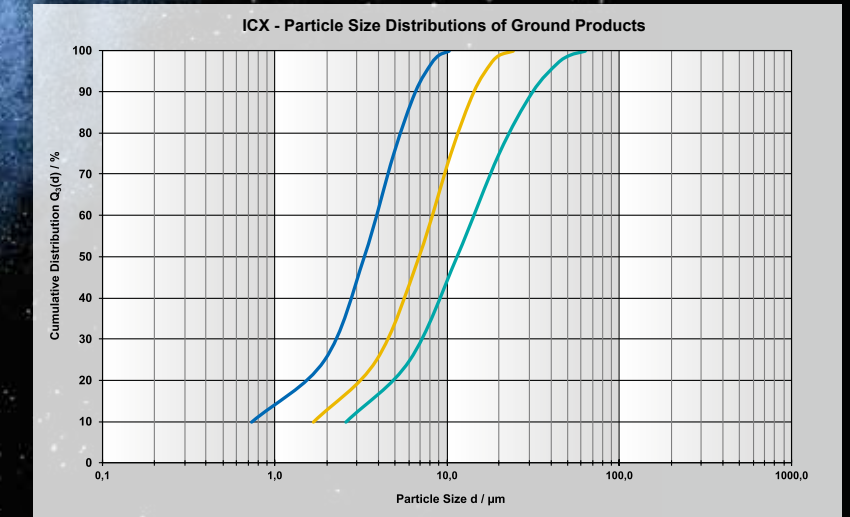
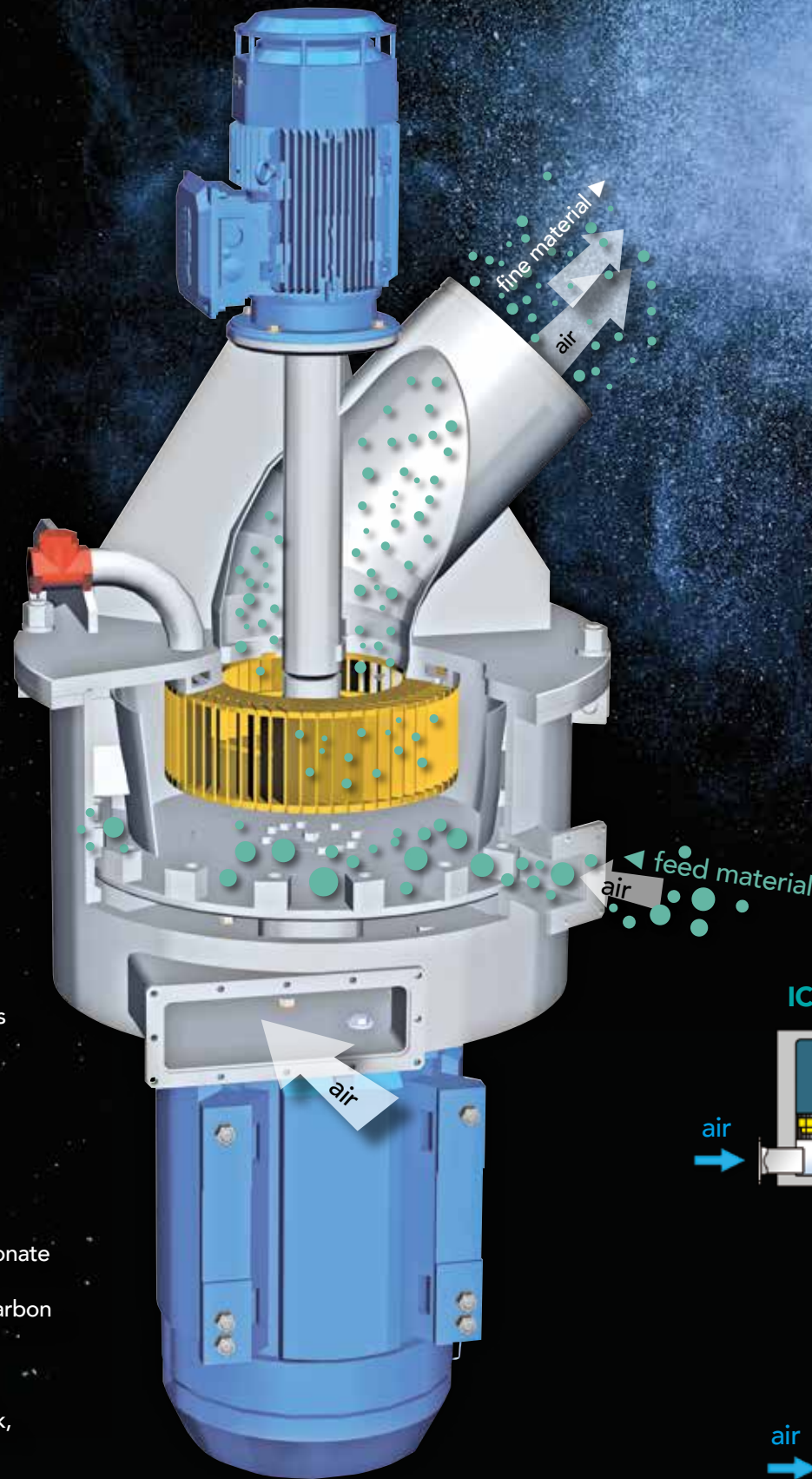
- Combined extra-fine dry grinding and classification of brittle materials
- Particle size top cut: 5 μm to 50 μm
- Capacity: 10 kg/h - 20,000 kg/h
- Mill power: 2 kW - 600 kW
- Air Flow: 100 m³/h - 40,000 m³/h
- Feed product size: 0 - 10 mm
- Grinding chamber dia.: 150 mm - 2,000 mm

Key Features

- Improved design for high performance extra-fine grinding
- Robust and durable mill housing
- Direct Drive concept
- Continuous and easy operation
- Simplified cleaning and maintenance routines
- Unique NEA classifying technology for superior particle size distribution and top cuts
- Optimized grinding chamber design
- Options:
 - Tailor-made wear protection
 - Customized grinding tools and classifier wheel types
 - Belt-Drive
 - Pressure shock resistant design (PSR 11)
 - ATEX compliant systems

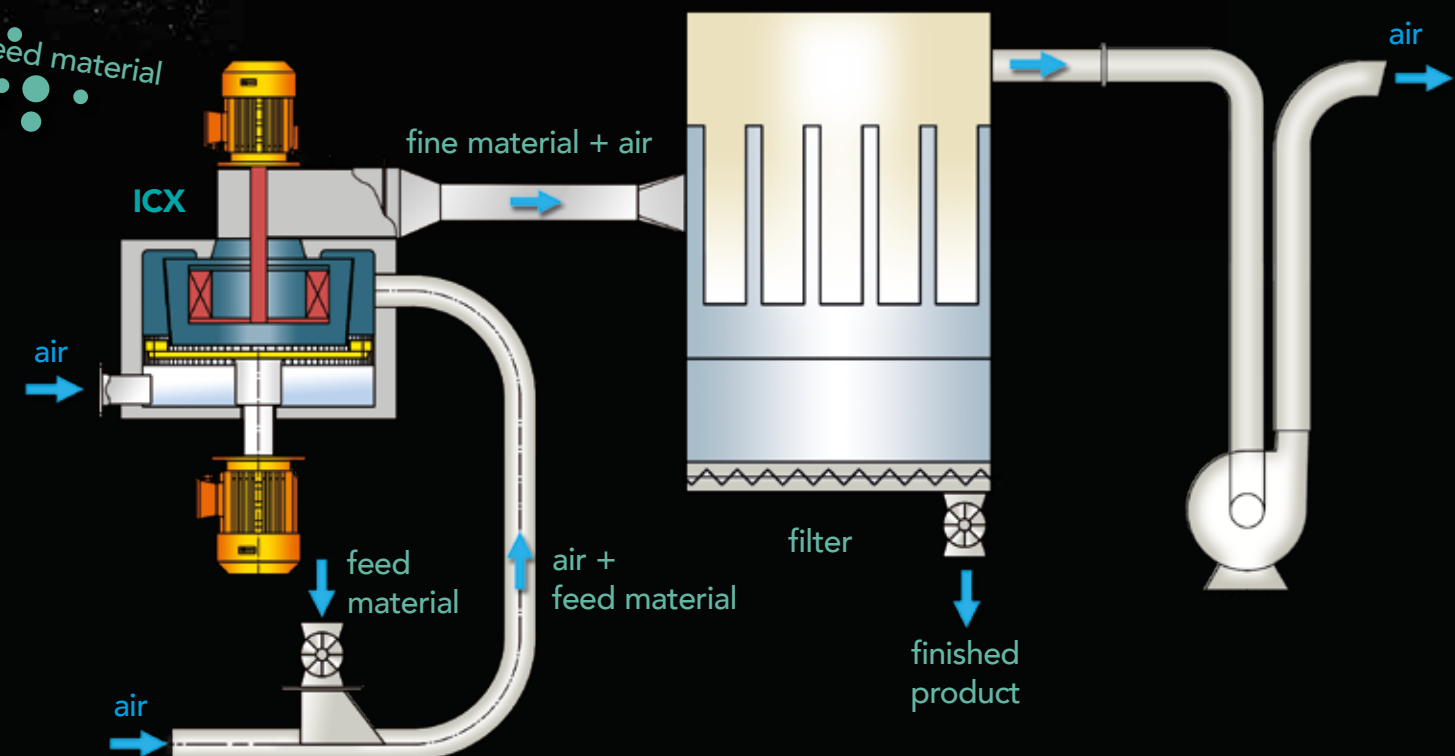
Applications

- Chemicals: Wax, E-PVC
- Food & Sweets: Sugar, Cocoa mixtures, Eggshells
- Lime Cycle Carbonates: GCC - Ground Calcium Carbonate
PCC - Precipitated Calcium Carbonate
- Performance Minerals: Graphite, Talcum, Activated Carbon
- Pigments & Paint:
 - Organic Pigments
 - Inorganic Pigments: Iron Oxide, Titanium Dioxide, Ultramarines, Carbon, Black, Recovered Carbon Black, from tire pyrolysis
- and many more ...



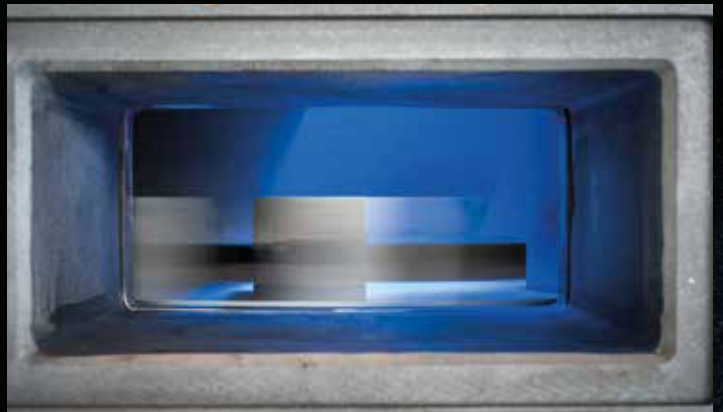
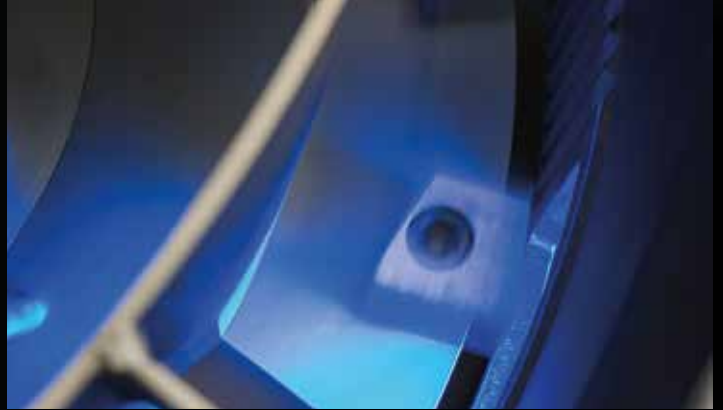
The diagram shows different particle size distributions of the fine material fraction

Classifier Range	ICX	min.	max.
Airflow Rates	m ³ /h	100	40,000
d ₉₇ -Values	μm	5	50
Throughputs	t/h	0.01	20





PROCESS



NEUMAN & ESSER GROUP

- COMPRESSORS
- SERVICES
- SEALINGS
- PROCESS
- DIGITALS

Find out more @

www.neuman-esser.com
www.neacusa.com
www.neac.de
www.stasskol.com
www.hofer-highpressure.com

Headquarters

Übach-Palenberg, Germany
Phone: +49 2451 481-01

NEUMAN & ESSER

Process Technology

Global

NEUMAN & ESSER Process Technology GmbH
Übach-Palenberg, Germany

North America, The Caribbean

NEUMAN & ESSER Process Technology USA, Inc.
Katy, Texas, USA

South and Central America, Cuba

NEUMAN & ESSER Engenharia e Soluções Ltda.
Belo Horizonte, Brazil

China

NEUMAN & ESSER (Beijing) Co., Ltd. (Sales Office)
Beijing, China

Egypt, Libya, Sudan

NEUMAN & ESSER Egypt Ltd. (Sales Office)
Cairo, Egypt